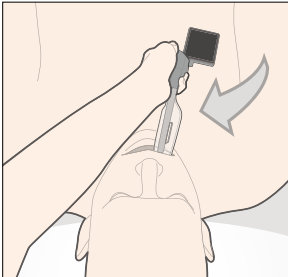
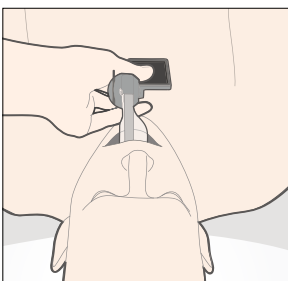


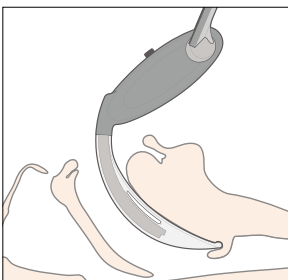
- 1 If possible, position the patient in the optimal position for direct laryngoscopy.



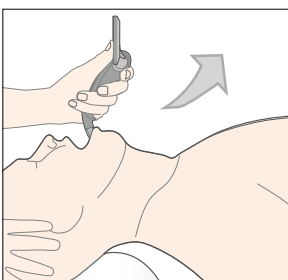
- 2 Look into the mouth; insert the blade into the right side of the mouth.



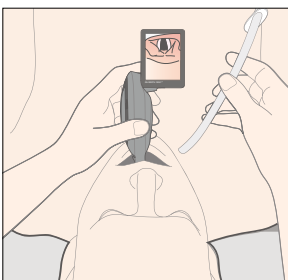
- 3 Move the device to the central position while sweeping the tongue to the left.



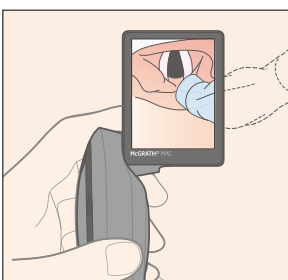
- 4 Advance the tip of the McGRATH® MAC blade into the vallecula.



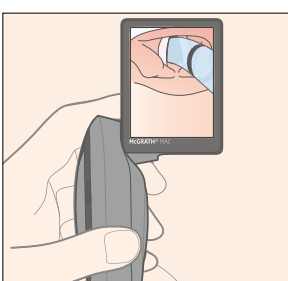
- 5 Visualize the epiglottis on the screen. Lift the anatomy forwards and upwards to expose a direct and indirect view of the glottis. When the device is in the optimal position the glottis should be viewed in the central upper section of the screen.



- 6 Advance the tube gently and atraumatically through the vocal cords. Tube placement can be performed either by looking directly in the mouth, indirectly on the screen or a combination of both.\*



- 7 Indirectly visualize the tube placement through the vocal cords. In optimal tube placement technique, the E.T. tube will enter from the right hand side of the display.



- 8 The screen view can be used to confirm the correct insertion depth of the endotracheal tube.

\* If a direct pathway for the tube was not created by sweeping the tongue or aligning the airway axis a stylet or a bougie may need to be used.

Using the MCGRATH® MAC EMS

Video Laryngoscope



Designed & manufactured  
by Aircraft Medical



Distributed by **Physio-Control**

[USA | Rx Only]

©2015 Physio-Control, Inc. Redmond WA. All names herein are trademarks or registered trademarks of their respective owners.  
GDR 3323996\_B